



c/o The Nemours Foundation  
Continuing Medical Education  
P.O. Box 269  
Wilmington, DE 19899

Non-Profit Org.  
US POSTAGE  
**PAID**  
Permit #375  
Wilmington, DE

# Pediatric Emergency Medicine

---

## Advances and Controversies for the Clinician

### April 7-10, 2010

This course is designed for physicians who practice pediatrics, emergency medicine, pediatric emergency medicine, pediatric hospital medicine and family medicine. Advanced Practice Nurses, Physician Assistants, EMTs and other health care professionals will also benefit and are welcome to attend.

The program will focus on pediatric patients who seek emergency care in an emergency department, urgent care center or primary care office.

**Visit [www.PedsEducation.org](http://www.PedsEducation.org)**

Your source for Continuing Medical Education from Nemours

Join us for our 11th Annual

# Pediatric Emergency Medicine

Advances and Controversies for the Clinician | 2010



© Disney



© Disney

Disney's BoardWalk Resort at *Walt Disney World*® Resort  
Lake Buena Vista, Florida | April 7-10, 2010



**Nemours.** Alfred I. duPont  
Hospital for Children

# General Information

## COURSE INTRODUCTION

This four-day course emphasizes the diagnosis and management of common and unusual problems of acutely ill and injured children. The course combines dynamic lectures, interactive group discussions and informal concurrent workshops to allow participants to interact with faculty. There will be many opportunities for question and answer encounters with presenters.

## ACCREDITATION

Nemours is accredited by the Accreditation Council for Continuing Medical Education (ACCME) to provide continuing medical education for physicians.

Nemours designates this activity for a maximum of 20.25 AMA PRA Category 1 Credits™. Physicians should only claim credit commensurate with the extent of their participation in the activity.

This course has been approved by the American College of Emergency Physicians for 19 hours of ACEP Category 1 credit.

## FEES

The conference registration fee is \$650 for physicians, \$550 for nurses and allied health professionals and \$275 for students and residents with a letter from their program director. Fee includes all course materials, continental breakfasts and refreshments at breaks.

## WELCOME RECEPTION

We have planned a dazzling dessert reception for you and your family on Tuesday, April 6, 2010 at 7 p.m. at the gazebo at Sea Breeze Point on Disney's BoardWalk. There will be a special "decorate your own cupcake" bar for the young folks and a special visitor for the young and the young at heart! Please indicate on the registration form the number of complimentary reservations you would like for your immediate family.

## HOTEL INFORMATION

A block of rooms has been reserved at Disney's BoardWalk Inn at the Walt Disney World® Resort. In this special resort, Walt Disney World® has recreated the charming atmosphere of a 1940's mid-Atlantic seaside village. Disney's BoardWalk Inn features shingled rooftops, private courtyards and gardens reminiscent of the romantic bed and breakfast inns found along the mid-Atlantic coast.

Not only is Disney's BoardWalk Inn within walking distance of Disney's Hollywood Studios™ and Epcot®, but nightclubs, restaurants and shops are right outside your front door. From the exquisite antiques to the beautifully appointed rooms, this luxury hotel experience is one you won't forget. Attendees enjoy complimentary scheduled transportation to all Walt Disney World® Resort Theme Parks.

Single or double rooms are available at the conference rate of \$290 per night plus tax (currently 12.5%, but subject to change.) Hotel reservations must be made through Walt Disney World® Resort, 407-934-3372. Please mention the Alfred I. duPont Hospital for Children and the name of the conference (Pediatric Emergency Medicine 2010) to obtain the group discount. The deadline for hotel reservations is March 5, 2010. **However, the hotel often fills well before the deadline, so please reserve early.** If you are interested in reserving a room at a different Walt Disney World® Resort hotel, you can also do that through the number above.

## DISCOUNT THEME PARK TICKETS

Information on specially priced tickets to the Walt Disney World® Theme Parks will be available upon conference registration. Details on those and exclusive half-day tickets will be mailed with your registration confirmation.

## EDUCATIONAL GRANTS

This course may be supported in part by unrestricted educational grants in accordance with ACCME Standards. At the time of this printing, a list of commercial supporters was not available. Appropriate acknowledgement will be given to all supporters in conference materials and at the time of the meeting.

## GROUND TRANSPORTATION

Disney's Magical Express Service, a complimentary shuttle and luggage delivery service, will take you from the airport directly to your Walt Disney World® Resort Hotel. Please call 407-827-6777 to book your Disney's Magical Express Service reservation.

To ensure seamless service, please make your reservation at least 30 days in advance of your arrival date.

You will receive an Airport Transportation Booklet from Disney's Magical Express Service containing general information and special bar coded luggage tags which you will attach to your luggage before departure. Upon arrival at Orlando International Airport, you will be directed to the Disney Airport Welcome Center.

Next depart for your Walt Disney World® Resort Hotel in a complimentary motor coach while your luggage goes straight from the plane to your room. At the end of your stay, enjoy the convenience of Disney's Magical Express Service from your Walt Disney World® Resort Hotel to Orlando International Airport.

## REGISTRATION

Advance registration is required and should be received by March 24, 2010. All registrations received by this date will be confirmed by mail. Registration is limited and will be honored in the order of the date received.

To register with a check: Return the completed registration form with full payment using check (payable to Nemours/Alfred I. duPont Hospital for Children) to the Continuing Medical Education Office, Nemours/ Alfred I. duPont Hospital for Children, 1600 Rockland Road, P.O. Box 269, Wilmington, DE 19899.

To register with a credit card: If you are paying by MasterCard, VISA, American Express or Discover Card, please complete the registration form found online at [www.PedsEducation.org](http://www.PedsEducation.org).

## A SUITE DEAL FOR EARLY REGISTRANTS

All conference attendees whose registration is received by February 14, 2010, by computer, fax or mail, will be entered in a drawing to win a free upgrade to a garden suite. The garden suite, which is two stories, sleeps four. The first floor has a living room with a pull out sofa, a powder room, and a small kitchenette. The second floor has a loft bedroom with a king size bed, and a full bath with shower and whirlpool tub. The upgrade would be for the evenings of April 6, 7, 8, 9 and 10, 2010.

## REFUNDS

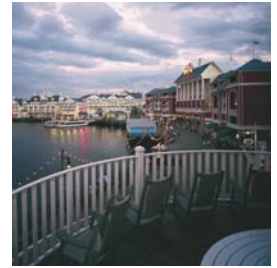
A refund less a \$100 processing fee will be given for WRITTEN cancellations received before March 17, 2010. No refunds will be given after this date. The hospital is not responsible for any cancellation or change fees assessed by hotels, airlines or travel agencies.

## DISCLOSURE POLICY

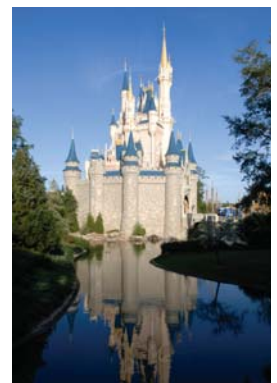
As a provider accredited by the ACCME, Nemours must ensure balance, independence, objectivity and scientific rigor in its educational activities. All faculty involved in the development of CME content are required to disclose to Nemours their relevant financial relationships. An individual has a relevant financial relationship if he/she has a financial relationship in any amount occurring in the last 12 months with a commercial interest whose products or services are discussed in the CME activity content over which the individual has control. Nemours has policies in place to resolve potential financial conflicts of interest. Relevant financial relationships will be disclosed to the activity audience.

## AMERICANS WITH DISABILITIES ACT

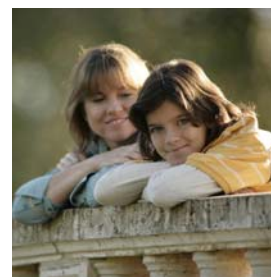
In accordance with the Americans with Disabilities Act, the duPont Hospital for Children will provide modifications in teaching methodologies to accommodate individual needs. To request disability accommodations, contact the Office of Continuing Medical Education at least 15 days in advance of the program at 302-651-6750.



© Disney



© Disney



## FOR MORE INFORMATION

Contact: Karen Bidus  
Nemours/Alfred I. duPont  
Hospital for Children  
Office of Continuing Medical Education

P.O. Box 269  
Wilmington, DE 19899

(302) 651-6752  
kbidus@Nemours.org

# 11th Annual Pediatric Emergency Medicine

Advances and Controversies  
for the Clinician | 2010

## GUEST FACULTY

**M. Douglas Baker, MD**  
Professor of Pediatrics  
Sarah M. and Charles E. Seay Chair in  
Pediatrics  
UT Southwestern Medical Center  
Dallas, TX

**Richard M. Cantor, MD, FAAP, FACEP**  
Associate Professor of Emergency Medicine  
and Pediatrics  
Director, Pediatric Emergency Medicine  
Director, Pediatric Emergency Medicine  
Fellowship  
Medical Director, Upstate Poison Control  
Center  
Upstate Medical University  
Syracuse, NY

## NEMOURS/ALFRED I. DUPONT HOSPITAL FOR CHILDREN FACULTY

**Steven M. Selbst, MD, FAAP, FACEP**  
Program Chair  
Professor of Pediatrics  
Jefferson Medical College  
Vice-Chair for Education  
Director, Pediatric Residency Program  
Thomas Jefferson University/  
Alfred I. duPont Hospital for Children  
Attending Physician, Emergency Medicine

**John Loiselle, MD, FAAP**  
Associate Professor of Pediatrics  
Jefferson Medical College  
Chief, Division of Emergency Medicine

**Magdy W. Attia, MD, FAAP, FACEP**  
Professor of Pediatrics  
Jefferson Medical College  
Fellowship Director  
Associate Director, Emergency Medicine

**Bruce L. Klein, MD**  
Associate Professor of Pediatrics and  
Emergency Medicine  
The George Washington University  
School of Medicine and Health Sciences  
Chief, Division of Transport Medicine  
Children's National Medical Center  
Washington, DC

**Jonathan E. Bennett, MD**  
Assistant Professor of Pediatrics  
Jefferson Medical College  
Attending Physician, Emergency  
Medicine/Sedation

**Maria Carmen G. Diaz, MD, FAAP, FACEP**  
Clinical Associate Professor of Pediatrics  
Jefferson Medical College  
Attending Physician, Emergency Medicine

**Michael A. Keating, MD**  
Clinical Professor of Urology in Surgery  
University of South Florida  
College of Medicine  
Chief, Pediatric Urology  
Nemours Children's Clinic  
Orlando, FL

**Amy D. Thompson, MD**  
Attending Physician, Emergency Medicine

**Arezoo Zomorodi, MD**  
Senior Fellow,  
Pediatric Emergency Medicine

## AGENDA April 7-10, 2010

Objectives are listed below each topic

### TUESDAY EVENING | APRIL 6, 2010

7:00 p.m. Welcome Reception

### WEDNESDAY | APRIL 7, 2010

7:00 a.m. Registration/ Continental Breakfast

7:45 a.m. Welcome S. Selbst, MD

8:00 a.m. **Evidence Based Management of Respiratory Emergencies** R. Cantor, MD  
Describe the management plan for a child with respiratory distress. Discuss the controversies in management of bronchiolitis.

8:45 a.m. **Management of Fever in Infants** M.D. Baker, MD  
Describe the protocols for managing fever in young infants and develop a rational approach to febrile infants.

9:30 a.m. **Neonatal Nightmares** S. Selbst, MD  
Recognize life-threatening conditions of babies in the first month of life and develop a differential diagnosis of the critically ill newborn.

10:00 a.m. **Questions and Answers** Faculty Panel

10:15 a.m. **Break**

10:30 a.m. **Conditions Mimicking Child Abuse** J. Loiselle, MD  
Recognize common skin conditions that may appear similar to child abuse. Employ historical features, physical exam findings and diagnostic studies to aid in differentiating abuse from other conditions.

11:00 a.m. **Neck Masses** M. Diaz, MD  
Generate a differential diagnosis for a young child with a neck mass. Discuss the latest management of a child with a cervical lymphadenitis.

11:30 a.m. **Questions and Answers** Faculty Panel

11:40 a.m. **Concurrent Sessions**

**Classic Pediatric Poisonings** R. Cantor, MD  
List important toxidromes and describe the signs and symptoms of these toxins. Demonstrate the basic management of these poisons.

**Difficult Cases from the ED—Lessons Learned** M. Diaz, MD  
Diagnose unique pediatric cases. Manage complex children in the emergency department.

**Minor Procedures—Tricks and Traps** S. Selbst, MD  
Discuss the management of dislocations and other common orthopedic problems. Apply techniques to manage many procedures, including how to remove fishhooks and treat subungual hematomas.

**ENT Emergencies—Cases to Remember** M. Attia, MD  
Develop an approach to a child with nasal trauma. Discuss the latest management of a child with an ENT infection or foreign body.

1:00 p.m. **Adjourn**

### THURSDAY | APRIL 8, 2010

7:00 a.m. **Continental Breakfast**

7:30 a.m. **Best Kept Secrets in Pediatric Emergency Medicine** S. Selbst, MD  
Identify challenging diagnoses and difficult decisions in pediatric emergency medicine. Develop an approach to common and unusual pediatric illnesses encountered in the ED.

8:30 a.m. **Mistakes You Do Not Want to Make in the Pediatric ED** R. Cantor, MD  
Recognize pitfalls and "red flags" in childhood illness. List ways to avoid errors in diagnosing meningitis and appendicitis.

9:15 a.m. **Management of Mammalian Bites** M.D. Baker, MD  
Identify those bites at particular risk for infection. Describe necessary wound management including indications for rabies and tetanus immunizations.





9:45 a.m. Questions and Answers Faculty Panel

10:00 a.m. Break

10:15 a.m. Seizures J. Loisel, MD  
Discuss the evidence-based rationale for initial management of a child in status epilepticus. List the typical features of a simple and complex febrile seizure.

10:45 a.m. Child with Abdominal Pain: Identifying Surgical Emergencies J. Bennett, MD  
Describe the differential diagnosis of the acute abdomen in children of different ages. Discuss the value of ancillary laboratory studies in managing a young child with abdominal pain.

11:30 a.m. Questions and Answers Faculty Panel

11:40 a.m. Concurrent Sessions

**Pediatric Cardiac Emergencies** A. Thompson, MD  
Recognize the child with myocarditis. Describe the initial management of a child with supraventricular tachycardia. Develop an approach to the child with congestive heart failure.

**Pediatric Radiology – Difficult Cases** M. Diaz, MD  
Identify subtle as well as classic radiographic findings in acute pediatric presentations. Develop an approach to reading plain radiographs commonly obtained in the acute care setting.

**Pediatric Fractures: The Good, the Bad and the Ugly** J. Bennett, MD  
Recognize common fractures in children. Develop a consistent approach to management of extremity injuries. Learn appropriate splinting techniques for many fractures.

**Avoiding Malpractice in the ED - Cases to Learn From** S. Selbst, MD  
Discuss common diagnoses that lead to malpractice suits in Pediatric Emergency Medicine. List ways to reduce malpractice actions in emergency or acute pediatric care.

1:00 p.m. Adjourn

## FRIDAY | APRIL 9, 2010

7:00 a.m. Continental Breakfast

7:30 a.m. Visual Diagnosis in Young Infants M.D. Baker, MD  
Identify visual signs of some common emergencies in infants. Formulate a differential diagnosis based on visual signs of illness. Recognize diagnostic findings common to emergencies in infants.

8:30 a.m. Five Recent Articles that Will Change the Way You Practice B. Klein, MD  
Discuss the latest literature and research in pediatric emergency medicine. Describe new evidence that should be incorporated into daily practice. Discuss the latest articles in pediatric emergency medicine from pre-hospital airway management, fever, trauma and GI disorders to wound care.

9:15 a.m. Major Head Trauma A. Thompson, MD  
Describe the initial management of a child with a serious head injury. Recognize the role of the emergency physician and neurosurgeon in managing children with a head injury.

9:45 a.m. Questions and Answers Faculty Panel

10:00 a.m. Break

10:15 a.m. Psychiatric Emergencies S. Selbst, MD  
Recognize which pediatric patients are at risk for suicide. Learn how to assess and plan disposition for an adolescent with a conversion disorder.

11:00 a.m. Sore Throat—Making an Educated Guess M. Attia, MD  
Describe the management of a child with strep throat and mononucleosis. Generate a differential diagnosis for a child with a sore throat.

11:30 a.m. Questions and Answers Faculty Panel

11:45 a.m. Concurrent Sessions

**Procedural Sedation & Analgesia for Pediatric Patients in the ED** B. Klein, MD  
Distinguish moderate sedation from deep sedation. Describe the effects and adverse effects of commonly used drugs for moderate and deep sedation, including chloral hydrate, pentobarbital, midazolam, fentanyl, ketamine, propofol, etomidate, and nitrous oxide. Recognize why one drug may better suit a particular patient than another one.

**Urologic Emergencies** M. Keating, MD  
Generate a differential diagnosis for a child with a swollen scrotum. Perform the initial evaluation of a boy with testicular torsion.

**Pediatric Sports Injuries** J. Loisel, MD  
Recognize the common risks for injury in children who participate in sports. Begin initial evaluation for children with sports related injuries. Identify common overuse injuries in the young athlete.

**CODE BLUE! Pediatric Mock Code Scenarios** M. Attia, MD  
M. Diaz, MD  
A. Thompson, MD  
A. Zomorodi, MD  
List the appropriate medications used in pediatric resuscitation. Discuss the newest recommendations for advanced life support in children/infants.

1:00 p.m. Adjourn

## SATURDAY | APRIL 10, 2010

7:00 a.m. Continental Breakfast

7:30 a.m. Visual Diagnosis in the Older Child J. Loisel, MD  
Recognize a variety of common and uncommon disease entities in the older child that present to the Pediatric Emergency Department. Generate a differential diagnosis and management plan for these disease entities.

8:30 a.m. Drowning and Near Drowning B. Klein, MD  
Describe the epidemiology of a child with a submersion injury. Recognize the risk factors of childhood drowning. Summarize the pathophysiology of submersion injuries. Explain the basics of stabilization and treatment of children with submersion injuries. Identify prevention strategies for pediatric drowning and near-drowning.

9:15 a.m. Questions and Answers Faculty Panel

9:30 a.m. Pediatric Emergency Medicine College Bowl J. Bennett, MD  
Recognize the classic visual presentations of illness and injuries in children. Describe abnormalities on a variety of pediatric radiographs.

10:15 a.m. Break

10:45 a.m. Classic Controversies in Pediatric Emergency Medicine J. Loisel, MD  
Describe different approaches to management of complex pediatric conditions. Develop a methodical and sensible approach to clinical situations that may have no right or wrong answer. Combine evidence-based literature with practical considerations in determining an approach to controversial cases.

11:45 a.m. Minor Head Trauma A. Zomorodi, MD  
Outline recommendations for returning to sports after a concussion. Determine which patients need a head CT after injury. Discuss controversies in managing a child with minor head trauma.

12:15 p.m. Dental Emergencies A. Thompson, MD  
Recognize oral injuries that are serious emergencies. Describe when consultation is indicated for children with dental injuries.

12:45 p.m. Questions and Answers Faculty Panel

1:00 p.m. Adjourn



# Pediatric Emergency Medicine

## Advances and Controversies for the Clinician

**April 7-10, 2010**

Name _____		Title/Degree _____
Name as it should appear on name badge _____		
Daytime Telephone Number _____		Fax Number _____
E-mail Address _____		
Profession/Specialty _____		Employer _____
Address to which confirmation should be sent _____		
City _____	State _____	Zip Code _____

**Fees:** Full payment is due with registration

- \$650 for physicians
- \$550 for allied health professionals
- \$275 for students and residents with letter from Program Director

**Wednesday, April 7, 2010**

**Concurrent Sessions: Please number in order of preference**

- \_\_\_ Classic Pediatric Poisonings
- \_\_\_ Difficult Cases from the ED
- \_\_\_ Minor Procedures
- \_\_\_ ENT Emergencies

**Thursday, April 8, 2010**

**Concurrent Sessions: Please number in order of preference**

- \_\_\_ Pediatric Cardiac Emergencies
- \_\_\_ Pediatric Radiology
- \_\_\_ Pediatric Fractures
- \_\_\_ Avoiding Malpractice

**Friday, April 9, 2010**

**Concurrent Sessions: Please number in order of preference**

- \_\_\_ Sedation and Analgesia
- \_\_\_ Urologic Emergencies
- \_\_\_ Pediatric Sports Injuries
- \_\_\_ Pediatric Mock Code Scenarios

**Welcome Reception**

\_\_\_ Yes, I would like a complimentary reservation for my immediate family for the Welcome Reception on Tuesday, April 6, 2010. Please reserve \_\_\_ (#) children's spaces and \_\_\_ (#) adult spaces.

**Indicate method of payment:**

- Register with credit card online at [www.PedsEducation.org](http://www.PedsEducation.org)
- OR
- Enclosed is my check for \$\_\_\_\_\_ made payable to the Nemours/Alfred I. duPont Hospital for Children. Mail check and registration form to Nemours/Alfred I. duPont Hospital for Children Office of Continuing Medical Education, P.O. Box 269, Wilmington, DE 19899

Your source for online pediatric continuing medical education from Nemours.  
**PedsEducation.org**

- Yes, I'd like to receive an online newsletter from PedsEducation.org, announcing upcoming conferences and the latest FREE online CME presentations from Nemours. (Please make sure you have provided your e-mail address above.)



**REGISTRATION DEADLINE: MARCH 24, 2010**

Register with credit card online at [PedsEducation.org](http://PedsEducation.org) or mail this form with check Nemours/Alfred I. duPont Hospital for Children | Office of Continuing Medical Education | P.O. Box 269 | Wilmington, DE 19899